

IMPLENIA SVERIGE AB - Traineeship



The projects:

We are processing mainly on big infrastructure projects like tunnels and bridges in Sweden. The projects are covering all kind of surveying tasks on a construction site. Some of ongoing projects we have are among others:

- Project Stockholm bypass, Rocktunnel Johannelund and Lunda
- Project Stockholm bypass, Bridge Hjulsta Södra
- Project Slussen Stockholm, Culvert west
- Project Getingmidjan, Bridge in Central Stockholm
- Project Varberg, Infrastructureproject close to Gothenburg

Assignment:

- All common surveying tasks on construction site
- Monitoring (automatically and manually with different sensors)
- Surveying for documentation
- Evaluating of all data with various software

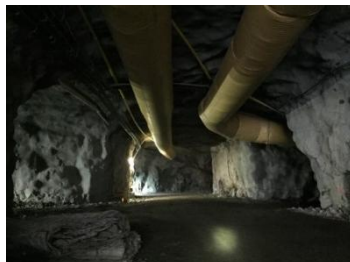
Your requirements:

- Eager for knowledge
- Flexible
- Language skills in at least one of the following languages
English, Swedish, German



Please send an application with CV and personal letter via email to:

Jens Kiener +46 (0) 70 168 09 33
Jens.kiener@implenia.com



Project Johannelund



Project Getingmidjan



Project Hjulsta Södra

