

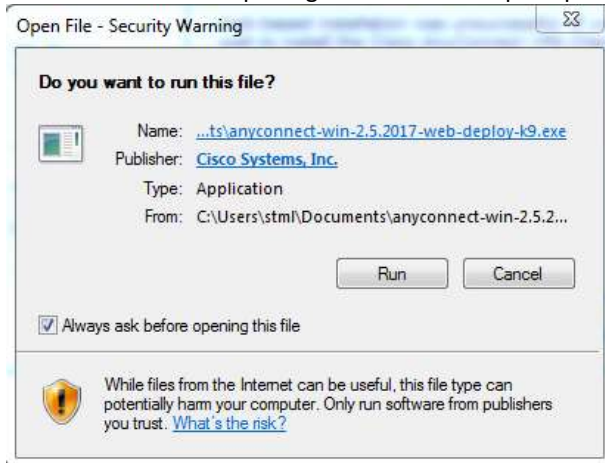
SSL VPN (ANYCONNECT) INSTALLATION INSTRUCTIONS FOR WINDOWS 8 OS

You will need to enter Username and Password in one of steps. Obtain them before proceeding:

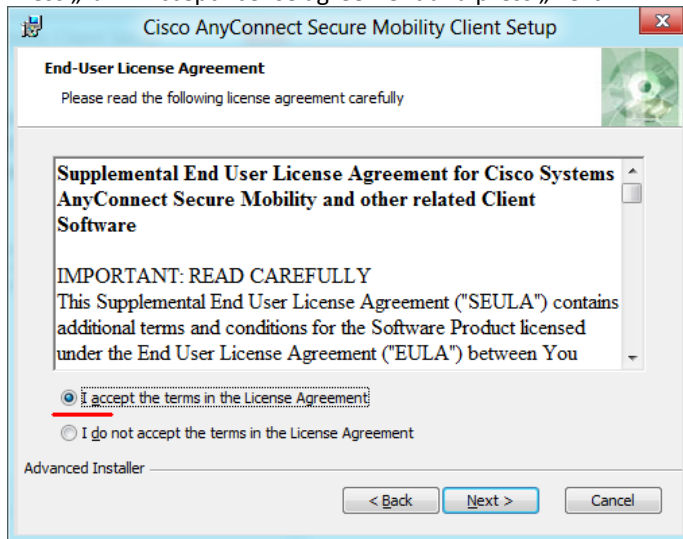
Your Username is **electronic_services_login_name@vgtu.lt**

Your Password is – **electronic_services_password**

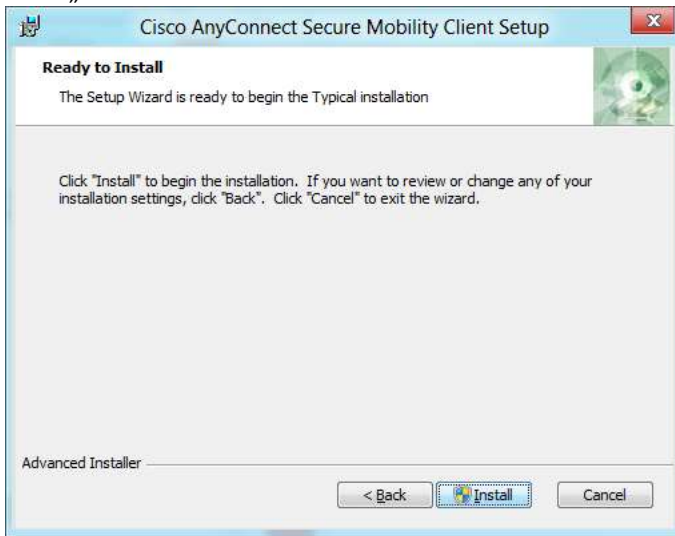
Download installation package and run it. This prompt might open:



Press „run“. Accept license agreement and press „Next“:



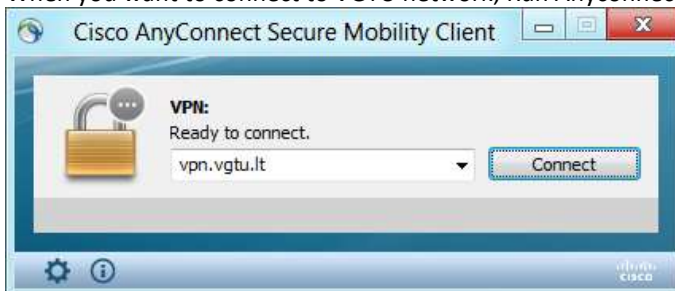
Press „Instal“:



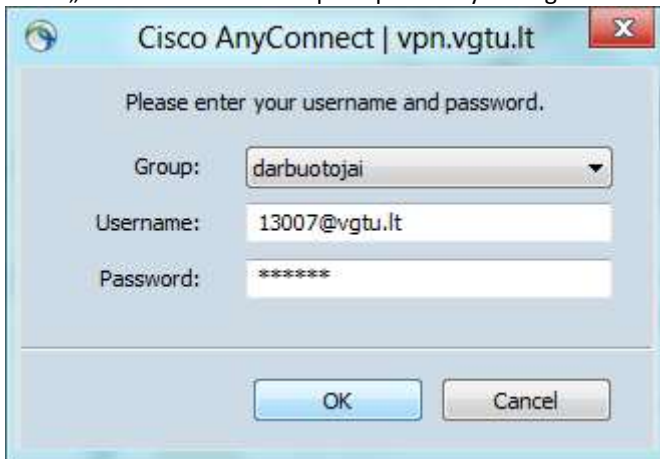
Wait until installation ends and press „Finish“:



When you want to connect to VGTU network, Run Anyconnect program and enter address „vpn.vgtu.lt“:



Press „Connect“. In the next prompt enter your login information:



Press „OK“ and wait for program to connect:



After successful connect you show see message near the system tray for several seconds and Anyconnect program icon in the system tray:

